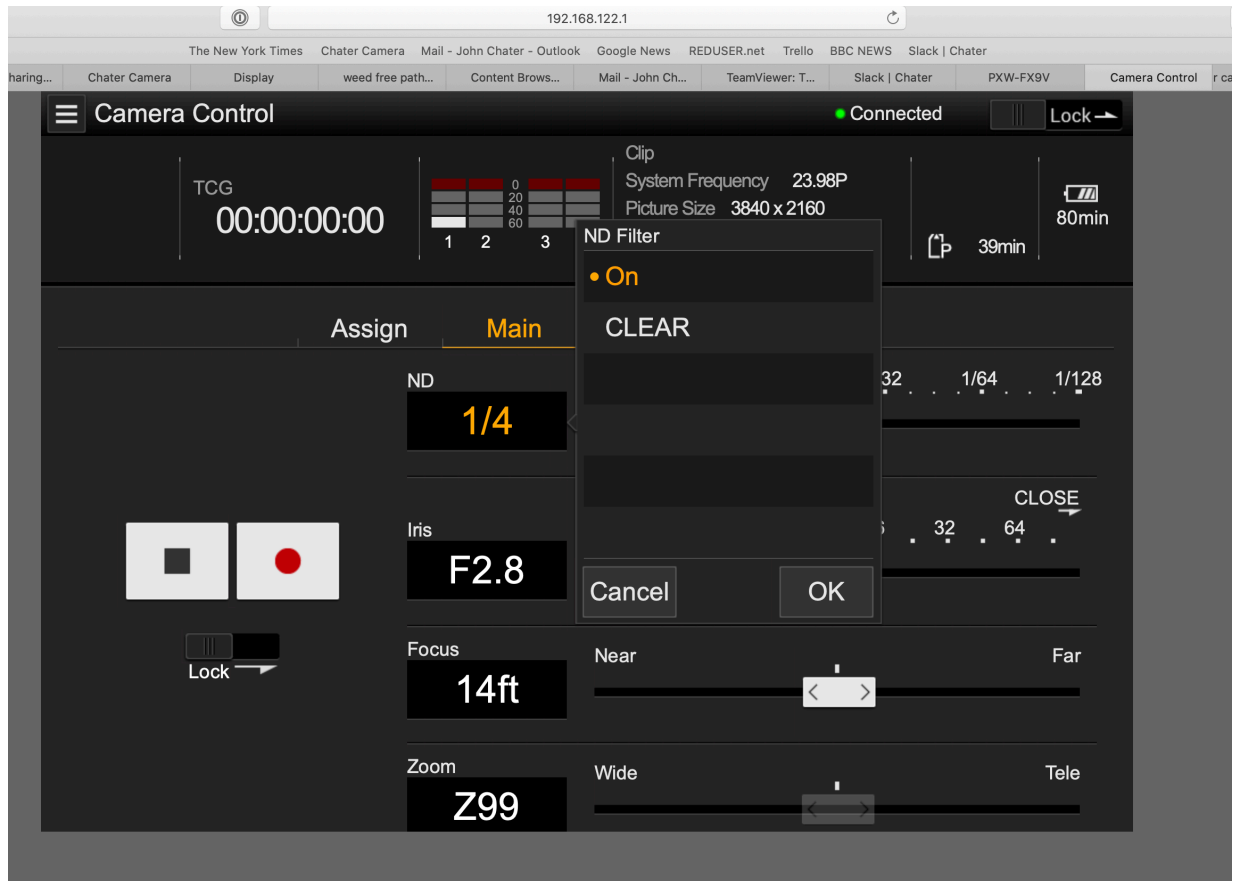


Control Sony FX9 with Browser Control (no monitoring)



Sony FX-9 Camera Setup:

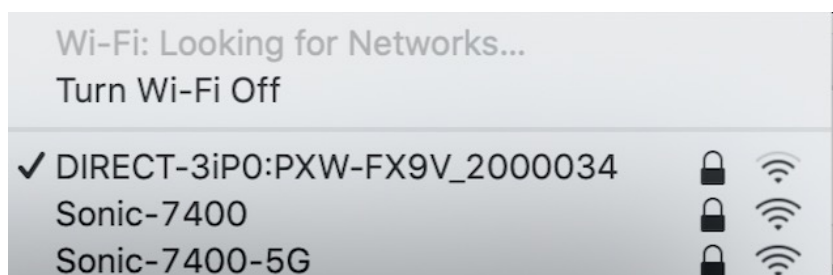
Network> Access Authentication > Create **User Name** and **Password**

Network> Wireless LAN > Setting> **Access Point Mode**

Network> APMode Settings> Where you find **Camera SSID** (network name) and **Password** and **IP Address** of the camera

Web Browser Set Up:

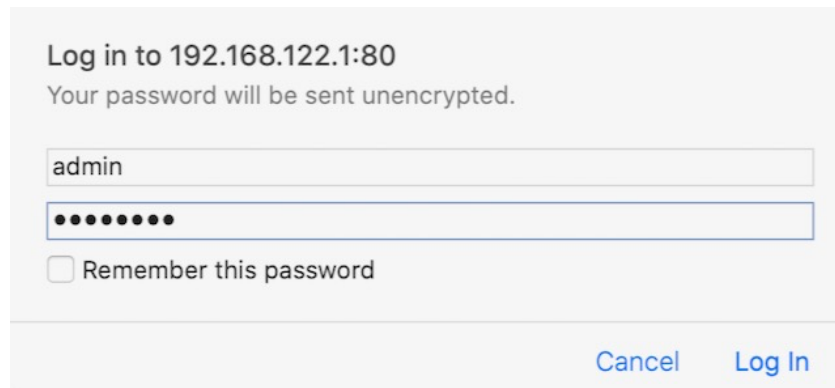
Search for Sony FS-9 created network. Address will include camera serial #



Open your web browser and enter **http://IP address of camcorder/ rm.html**
If the camera IP address is 192.168.122.1, enter http://192.168.122.1/ rm.html in the address bar.

You can check the IP address of the camcorder on the Network Status screen

You will be prompted to enter the camera **User Name** and **Password**



The image shows a login dialog box with the following elements:

- Title: **Log in to 192.168.122.1:80**
- Warning: Your password will be sent unencrypted.
- Username field: Contains the text "admin".
- Password field: Contains ten black dots representing a masked password.
- Checkbox: Remember this password
- Buttons: "Cancel" and "Log In" (both in blue text).

You should now see the Camera Control screen on your browser. You have full control of the camera interface and menus. But there is no monitor.